



2016

ANNUAL REVIEW







CONTENTS





Welcome	03
Message from the Chair	05
Reflecting on 2016	09
Focus on Health & Safety	15
Our Company Values	16
Project Portfolio	17
Completed Projects	19
Current Projects	59
Community Matters	87
Awards & Accolades	93



Welcome

Having celebrated our 20th anniversary in 2015, our third decade of operations has certainly got off to a fantastic start.

Across the country and beyond, our teams are delivering high quality projects, on budget, on programme and, of paramount importance, safely. The health, safety and wellbeing of not only Construction's employees, but of our clients, subcontractors and the public is key to our successful delivery of projects. Our goal is simple – we want everyone to return home safely, every day.

Our Auckland team has grown substantially over the past year, and I'm thrilled to see the Leighs culture and commitment to showing pride, passion and excellence in all that we do being so eagerly embraced. As we grow into a tier one construction company, I'm confident our values and visions that have stood us in great stead over the past decades are still relevant for the future. The Auckland market is seeing the biggest growth in my

living history, and with projects such as Smales Farm The B:HIVE, SKHY Apartments and Ko Awatea 2 at Middlemore Hospital among our portfolio, Leighs is certainly making our mark up north.

In Christchurch, the rebuild continues, and we are proud to be playing such a major role. In the CBD, the ANZ and BNZ Centres have been two of our largest projects to date. It's great to see the city centre evolving, as more developments come out of the ground. Across the city, our teams have completed a wide variety of projects. The passion and craftsmanship that has gone into these projects is a credit to all those involved.

At the University of Otago in Dunedin, the Leighs flag is flying high. In just a year, our team in Dunedin has cemented our presence, delivering the first stage of the Science Precinct to huge accolades, and around the corner commencing Leighs Cockram JV works on the new dental school.

I am exceptionally proud of our track record of developing ongoing relationships with our clients, and was thrilled to have a team back on the ice delivering an extension and refurbishment project at the Hillary Field Centre at Scott Base during 2016. Working in such a remote location is without doubt challenging, both logistically and physically. It's amazing to see the Leighs team rise to such tasks, and I look forward to delivering more such projects in the future.

Enjoy our review of 2016. If a picture says a thousand words, the images of our projects and people in the following pages speak for themselves in relaying what an awesome year we have had.



Anthony Leighs
Managing Director









Message from the Chair

Another massive year for the company has passed, with highlights being practical completion of some iconic projects (including the ANZ and BNZ Centres in Christchurch), and the winning of new, equally iconic projects going forward.

The Leighs Construction story spans a mere 20 years to date, yet we are pleased by the inroads we are making into the tier one construction scene, particularly in Auckland. Having completed our first Auckland project at Middlemore Hospital, we are thrilled to be back on site preparing to deliver our second project for this client.

When asked recently as to why Leighs was his constructor of choice, a client stated it was the ability to pick up the phone and speak directly to Anthony at any time.

Continuing to offer the personal connection to clients is very important to us.

The attributes Leighs brings to market are being recognised widely as “game changers” in a very competitive environment. At a recent client discussion, Leighs was complimented on our financial strength, as a recognised, positive attribute. Trade labour supply has also been very important to our clients, particularly in the Auckland market. Our highly experienced team has been congratulated regularly for providing nimble and innovative solutions.

The successful completion of our joint venture project with Cockram Construction at Burwood Hospital, and chosen as preferred ECI contractor for the Metro Sports Facility, have also been highlights and proud, major steps in the rebuild of Christchurch.

The Leighs Board totally supports the Construction Contracts Amendment Act, and although some finer details are still to be resolved, processes have been put in place to ensure compliance, and to ensure retentions are protected for our subcontractors.

Best wishes to all our clients, their advisors, suppliers and our hard-working management team and staff. Our very successful year is due to you all.

Peter Young
Board Chairman







Reflecting on 2016

Our executive team is responsible for the leadership, growth and performance of the business, and works with the Board of Directors to define our strategic direction and initiatives. As leaders, they are passionate about our values and vision, and work hard to ensure the culture that makes Leighs a top performing construction company evolves.





DAVID JARMAN

Chief Financial Officer

The finance team works closely with the project teams to ensure good financial disciplines, accurate costing to projects, and timely reporting to management and the board. Throughout the year, Leighs continued our track record of paying all subcontractors and suppliers within terms.

We have focused on maintaining a strong balance sheet, which underpins the bonding and other financial facilities needed for the growing number and value of projects we are taking on.

Recent changes to the Construction Contracts Act require that all retentions on subcontracts after 31 March 2017 must be held on trust in liquid assets. Leighs has sufficient liquidity to meet these requirements.

We have invested further in IT systems, with a fully managed and resilient network as the basis to operate the systems we use in the business, and for communicating with clients, subcontractors and other stakeholders.

Videoconferencing is proving an effective tool, especially for project meetings. Teams can work together across locations, reducing travel time and cost.

We have implemented tools for health and safety incident reporting and hazard notification, which will simplify these processes and link them into existing systems.



DAVE HUNTER

General Manager Construction

I joined Leighs Construction on 1st March 2017, and am excited to be working in this new, national role. People are at the heart of any business, and Leighs is no exception. I am passionate about continuing to build high calibre teams, and to ensure we develop our existing employees and grow their careers with Leighs.

One of the biggest challenges the construction industry is facing as we experience a period of extensive growth is a pressure on resources – it is the companies who value their employees that will succeed in delivering quality projects. We are in the business of delivering projects, and ultimately this is all around providing the support to our people.

Maintaining open lines of communication and working collaboratively with our clients and the wider project delivery team is fundamental to the timely delivery of any project. Increasingly, we are becoming involved in projects from conception, through the early contractor involvement (ECI) process. This creates a win/win result for all those involved, and done well can be a less confrontational form of contracting.

Innovation is all around us, as technologies and new methodologies evolve. We are using BIM on a growing number of projects, and Leighs is developing our strategy to more proactively use BIM in the future. This technology can assist in increasing the use of modular construction, ultimately reducing on site labour demands.





PAUL O'BRIEN

National Commercial Manager

The business continues to perform exceptionally well, due in no small part to the ongoing impressive levels of commitment, enthusiasm and professionalism shown by our staff, who work tirelessly to ensure client expectations and requirements are surpassed at all stages of our engagement. I believe it is important to also acknowledge our broad and varied client base for entrusting Leighs with the delivery of their projects. Finding the right balance between the requirements and expectations of our clients, whilst taking appropriate measures to safeguard the company's interests, can often be difficult, but our commercial and project teams continue to achieve this balance exceptionally well.

In addition to the continued growth of the business in the Auckland and Dunedin markets, my key highlights have been the successful completion of projects including the BNZ and ANZ Centres in Christchurch, the PC2 laboratories at Middlemore Hospital, the architecturally unique projects at The Piano and Mt Pleasant Community Centre, together with the delivery of the Burwood Hospital Redevelopment project.

One other pleasing highlight is the ongoing support of our supply chain partners across the business. This continues to be nothing short of phenomenal, and is a great reflection on our people and the culture of our business.



JEFF VIVIAN

Regional Manager Auckland

2016 has seen some fantastic achievements for the Auckland team. Completing and handing over initial projects has been a highlight, along with seeing large projects come together as they head to project completion is certainly exciting and very pleasing to see. The Smales Farm B:HIVE development, in particular, is looking like the jewel in the crown at Smales Farm, and exciting elements, like the self-supporting staircase, are certain to make this development a landmark. The team at SKHY Apartments are also heading to completion of a repurposing project from what was a corporate head office into high end apartments, a project that is reinvigorating the surrounding area.

On the new business front, we are proud to have recently been named preferred ECI contractor for a Fisher & Paykel Healthcare project, an exciting project that is aiming to push the boundaries in terms of BIM deliverables. We have also secured the next stage of Ko Awatea at Middlemore Hospital.

Two further highlights for me are how the supply chain is embracing us in Auckland, and helping us deliver exceptional projects, and our people. We ask our teams to take on significant challenges, and they deliver on these every single day. The year ahead is certainly shaping up to be another successful one.





MIKE KNOWLES

Regional Manager South Island

It has been an epic year for the South Island team, completing and handing over the BNZ and ANZ Centres, the largest projects in the history of the company. The rebuild of Christchurch is progressing well, and the projects we have completed and are presently delivering are exceptionally varied. Our presence in the retail, office, health, government and community sectors continue to be strong. Our expansion into Dunedin, where we are delivering two projects at the University of Otago, is the beginning of a strong future in the region.

The completion of such a large amount of work during the last financial period has resulted in the New Business team being tasked with winning projects to maintain our forward workload. New projects awarded over this period include Christchurch Outpatients, Forte Health Stage 2, International Rental Car Precinct, Colombo Street Retail/Kiwi Bank Development and Prestons Road New World. We are exceptionally proud to be delivering a project as part of the Arts Centre Redevelopment, one of Christchurch's most iconic historic precincts.

Looking forward through 2017/18, the pipeline activity is strong, and we have the capability and capacity to deliver additional projects across the South Island.







LEIGH'S
CONSTRUCTION

Focus on Health & Safety

Delivering projects safely and the health and wellbeing of our people are critical to our success as a company. Ensuring the health and safety of all is a driver behind everything we do.



Work Safe Home Safe

When it comes to health and safety, our ultimate goal is one everyone can relate to. It's about everyone, including staff, subcontractors, clients and the public, returning home safely, every day. Leadership and our company culture are crucial to developing an understanding that prevention is key, and everyone, from our board to our on-site teams and office staff, are responsible for health and safety.



AS/NZS 4801 Accreditation

Our health and safety management systems first achieved AS/NZS 4801 accreditation in May 2015. With the introduction of the Health & Safety at Work Act 2015 in April 2016, we updated our policies and procedures to meet the requirements of this new act. Our three-yearly review is due in October, and we are confident of maintaining our accreditation.



ACC Workplace Safety Management Practices

After undergoing an audit of our health and safety management systems in February 2017, we have retained our Tertiary Level accreditation. This further reinforces our commitment to ensuring our policies and procedures are followed through at every level.



Leighs Health & Safety Committee

2016 has seen major growth across the country for Leighs Construction, which has led us to restructure our formerly regionalised Health & Safety Committee to create one national entity. With a focus on employee participation, the committee is made up of representatives from all work groups. The committee meets monthly to assess and discuss any health and safety issues from all corners of the business.

Our Company Values



Pride In

Constructing great buildings
Being open, honest and transparent
Being part of a highly successful and growing company
Our reputation and our brand

Passionate About

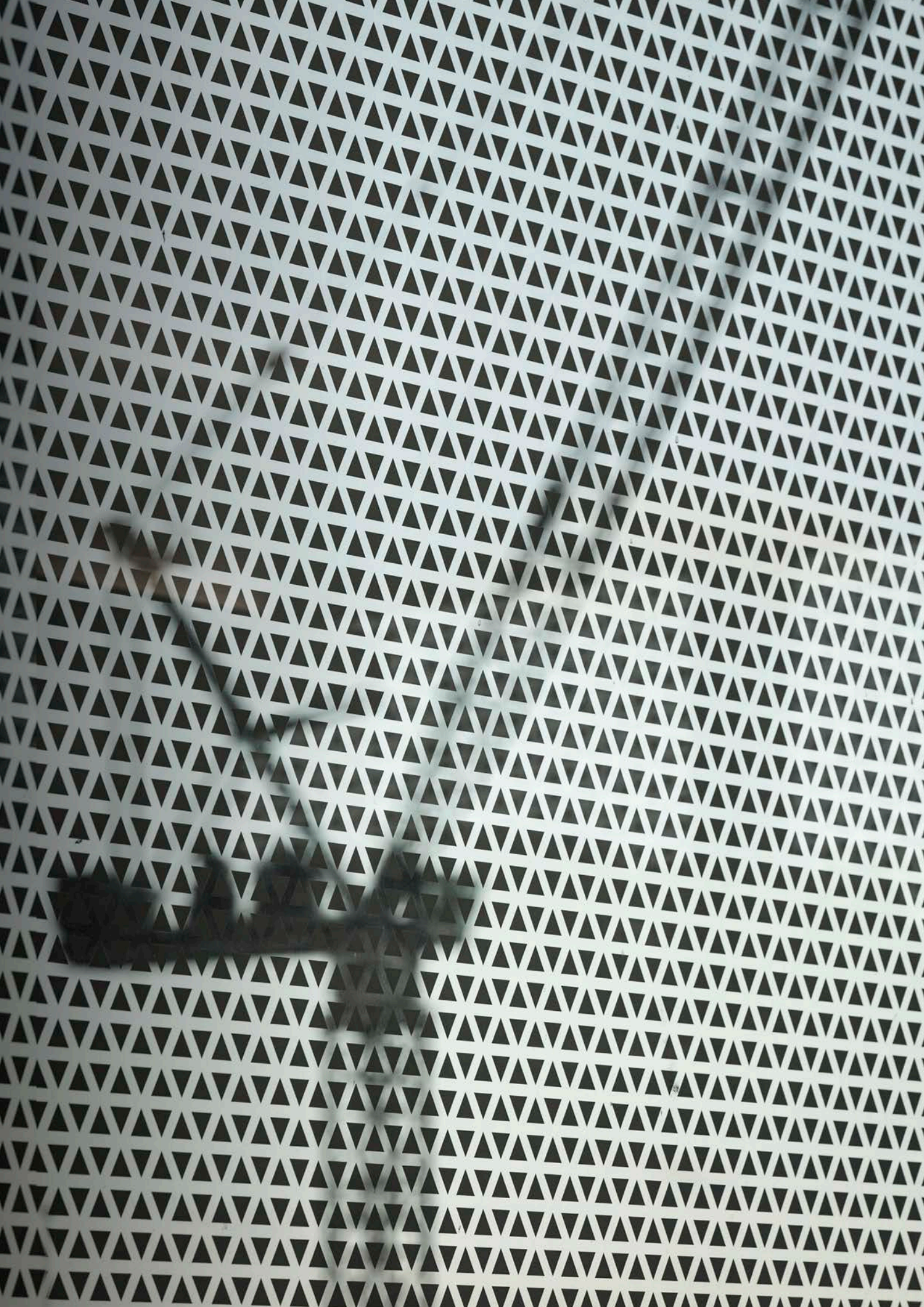
Work safe, home safe
Exceeding our client expectations
Developing our people, skills and careers
Motivated, engaged and empowered teams

Excellence In

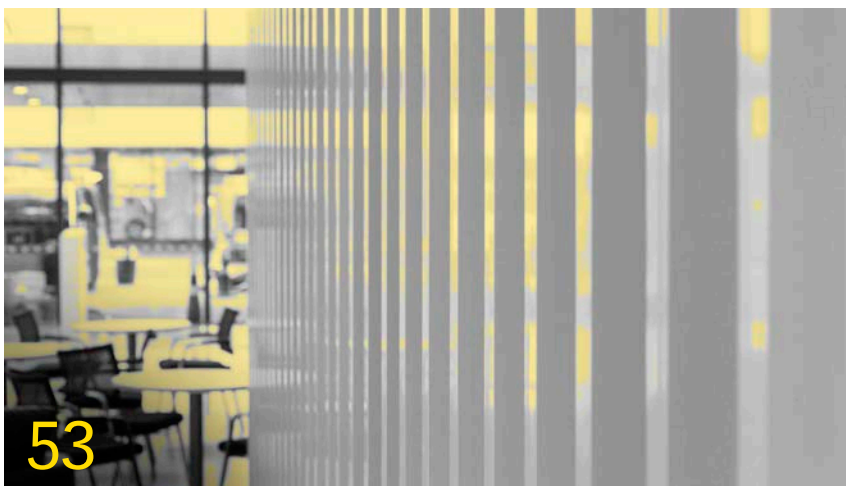
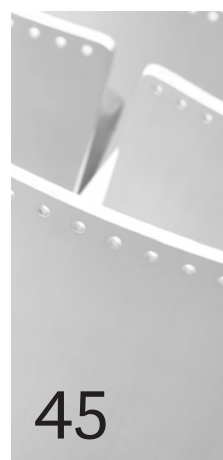
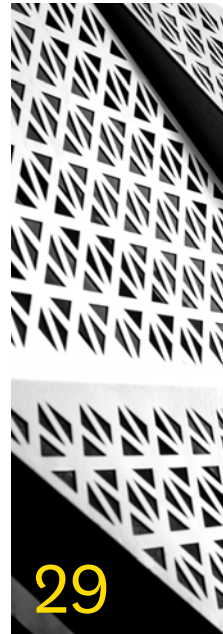
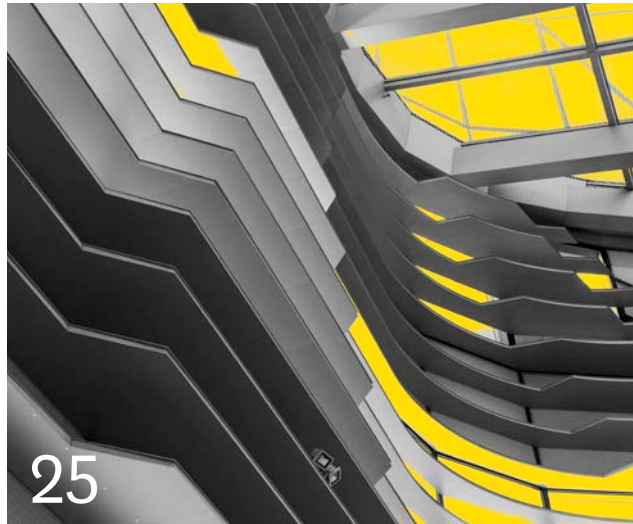
Delivering outstanding quality buildings
Building relationships and communication
Meticulous project planning and reporting
Everything we do

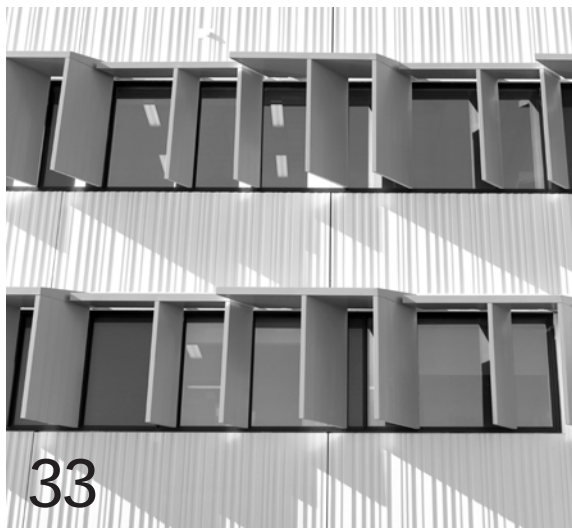
PROJECTS PORTFOLIO

Our wide range of projects exemplify our diversity. We are experienced at constructing in operational environments such as hospitals and universities, rise to the challenge of working in harsh and remote locations, like Antarctica, and have the planning and skills in place to deliver projects in bustling, central city locations...



Completed Projects





33



49



57

21 Harley Gray PC2 Laboratory
Fitout, Middlemore Hospital

25 ANZ Centre

29 BNZ Centre Stage 2

33 Burwood Hospital
Redevelopment

37 The Hub, Hornby

41 Mt Pleasant Memorial
Community Centre

45 The Piano

49 CIAL Mars Airbridge

53 Blackwells Holden & Mazda
Yards & Showroom

55 Armagh Street Carpark

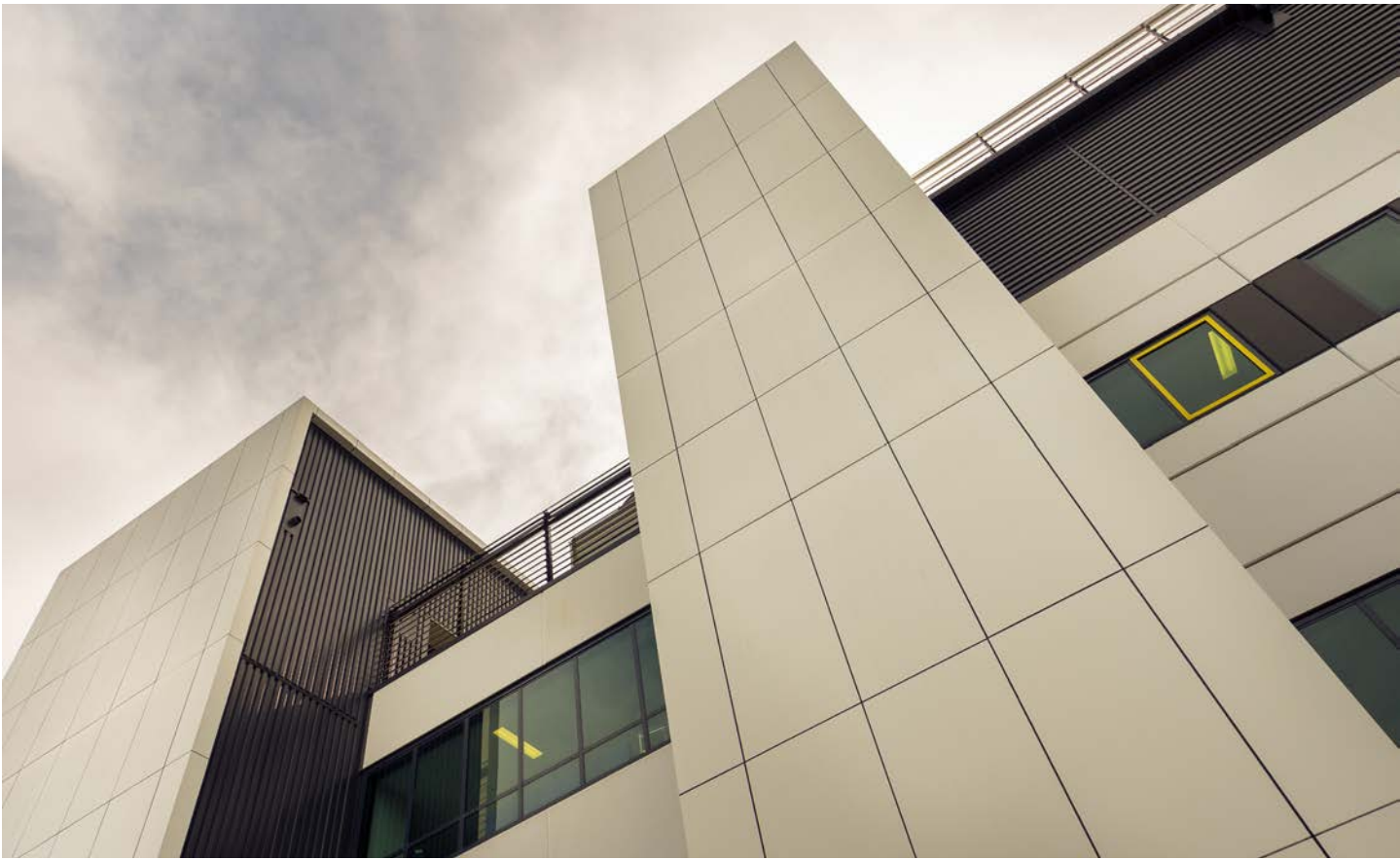
57 Hillary Field Centre
Extension & Refurbishment





Harley Gray PC2 Laboratory Fitout, Middlemore Hospital





Harley Gray PC2 Laboratory Fitout, Middlemore Hospital

AUCKLAND

Completed in August 2016, this project was commended by the Facilities Manager as being the best run project ever delivered at Middlemore Hospital.

Key to its success was ensuring minimal disruption to the operational hospital. This was an extremely challenging project for the team, who worked in a future-proof shell on level one of the new

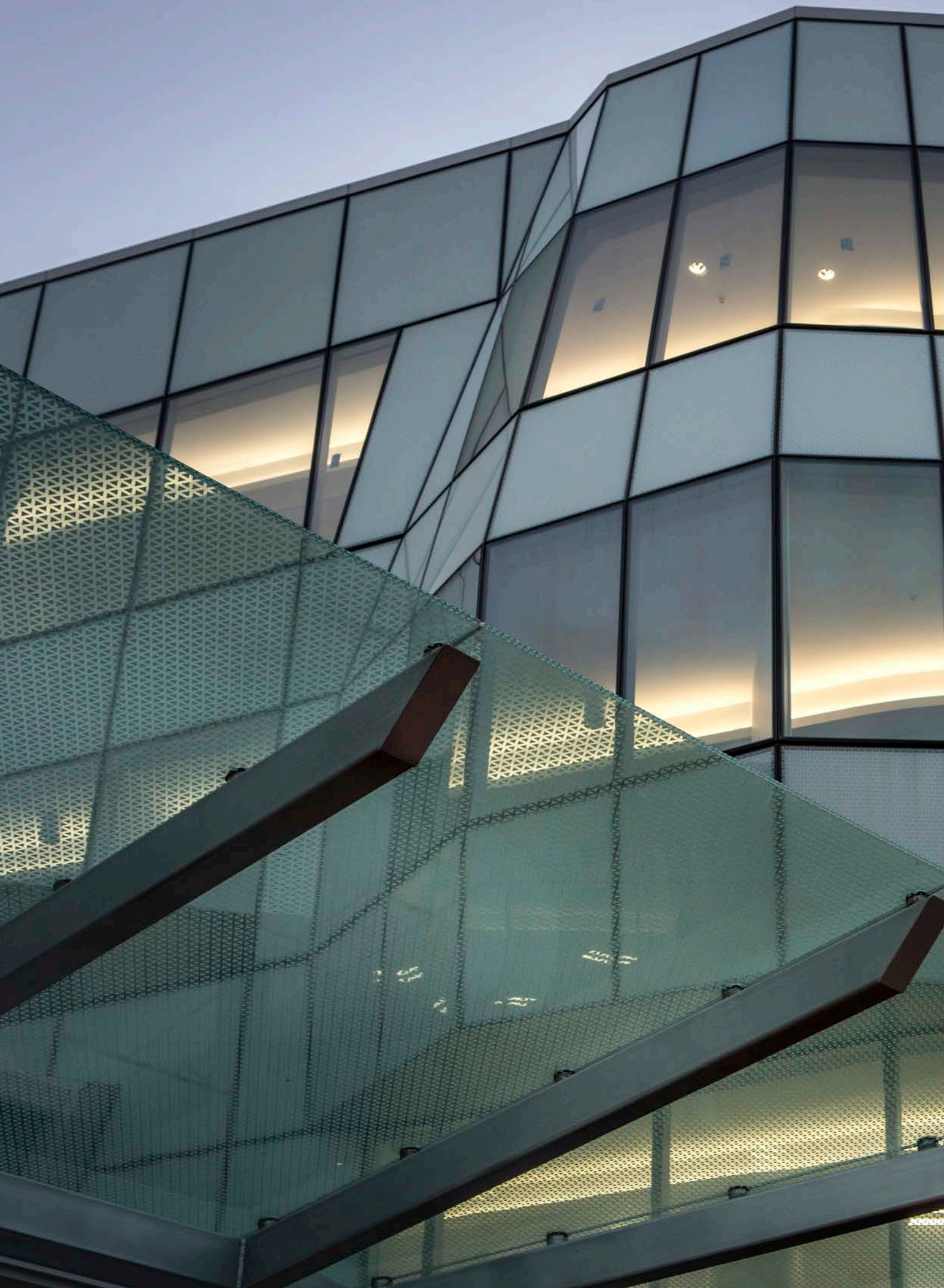
Harley Gray building, directly below 14 operating theatres, and next to a 24-hour neonatal intensive care unit.

The team researched and implemented a system where they fixed some 30,000 concrete anchors into the concrete slab on the underside of the existing live theatres, without causing any noise,

vibration or other disruptive forces to the staff operating in the theatres above. They also built a 12m high scaffold loading bay platform, so they could lift all materials into level 1.

The project was completed to programme, with minimal disruption to the existing facility.







ANZ Centre

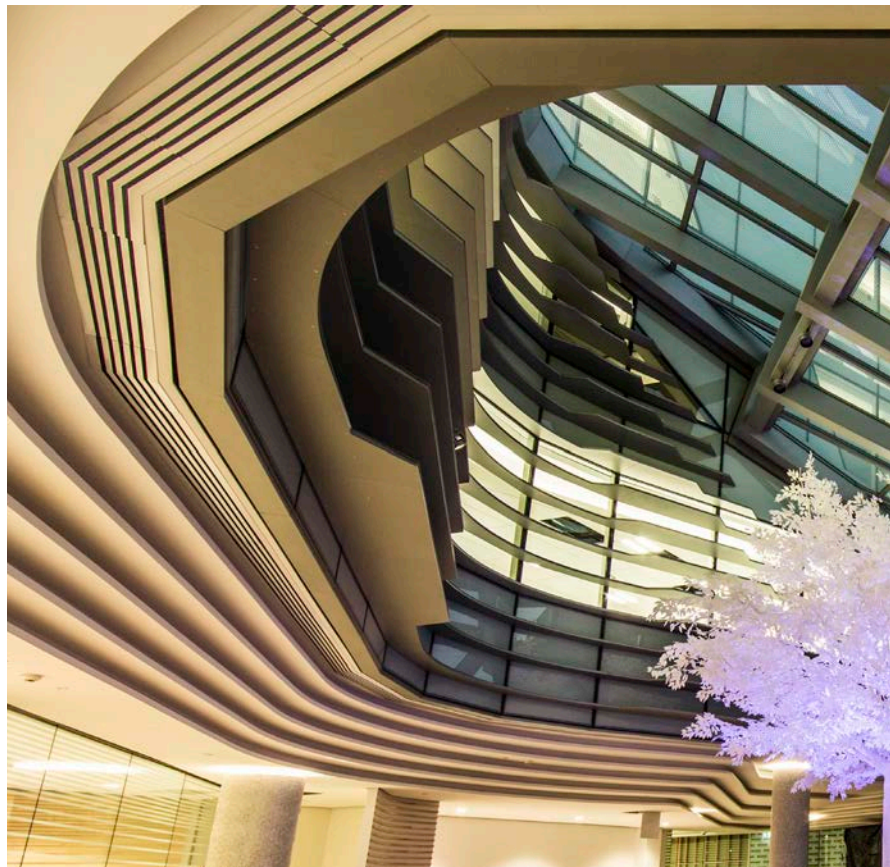
CHRISTCHURCH

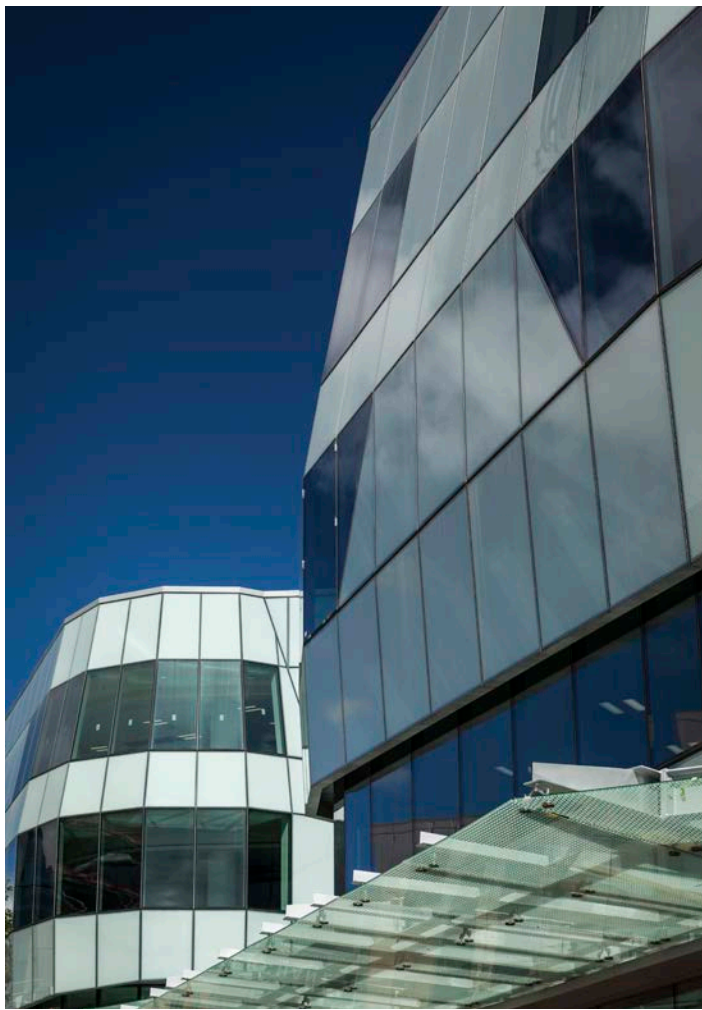
Construction of the three-storey plus basement ANZ Centre, on the site of the former Triangle Centre in Christchurch's CBD, was completed in March 2017, with a number of retailers having opened in time for Christmas 2016.

The ANZ Centre provides office, retail and hospitality spaces, with tenants including ANZ bank, BECA engineering, Glassons, Hallensteins, Macpac and Storm.

A stunning example of modern architecture, the building's main facades are in a lightly tinted, high performance glass, with expressed vertical mullions. Inside the atrium, an artificial white tree is a key focal point.

The successful delivery of this key central city project entailed high levels of communication with the surrounding businesses and retailers. Major works, including a series of concrete pours, were programmed to take place from 2am in the morning to ensure minimal disruption.







BNZ





BNZ Centre Stage 2

CHRISTCHURCH

Stage 2 of the BNZ Centre, fronting onto Cashel Street in the CBD, was completed in March 2017. Key tenants include the BNZ bank, Cavell Leitch law firm and ACC, for whom Leighs has also delivered the fitouts, along with retail and hospitality providers. The development's courtyard and laneways are a hive of activity, bringing new life to the central city.

The five-storey, with mezzanine carpark, development looks out over a 1000m² landscaped courtyard set between the two buildings.

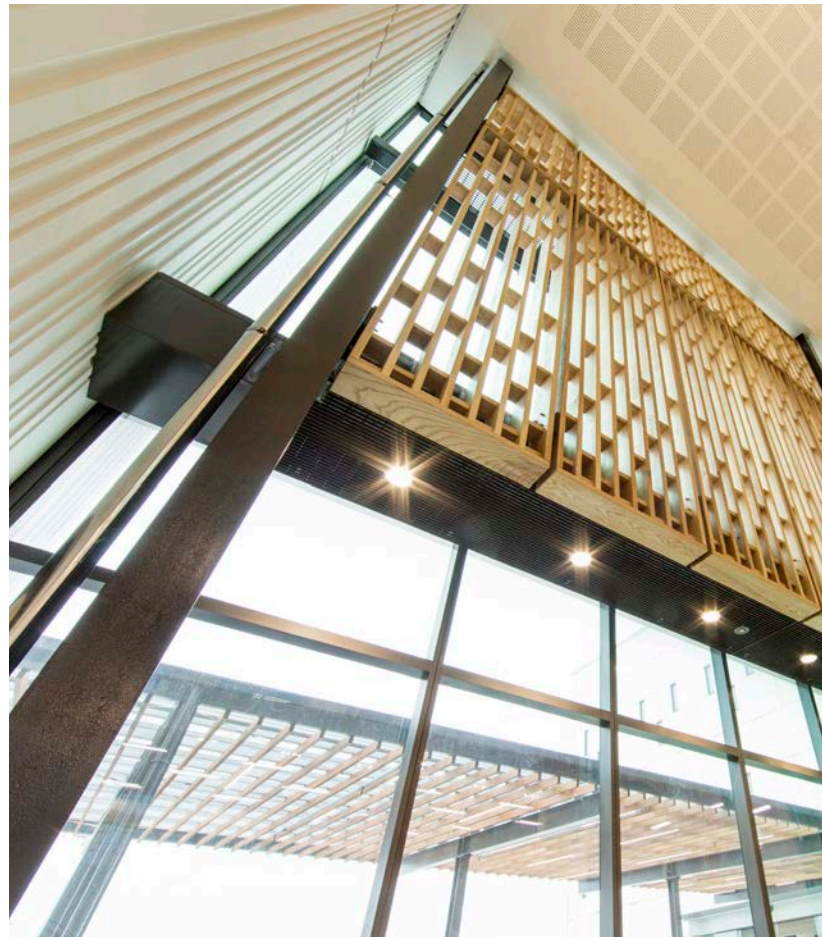
Leighs Construction worked with the client from the outset, prior to any concept designs. This early contractor involvement enabled the two-stage development to progress within budget from design through to construction.

BNZ Centre Stage 2 was officially opened by former Prime Minister John Key on his last visit to Christchurch as the country's leader.











Burwood Hospital Redevelopment

CHRISTCHURCH

Burwood Hospital's new state-of-the-art facility for Canterbury's older people is part of the largest and most complex hospital building project in New Zealand's public health service history.

Included in the 32,000m² project are three, three-storey ward blocks that provide accommodation for up to 230 patients; clinical support services such as radiology and pharmacy; an outpatient clinic that will cater for about 80,000 people each year; and back-of-house areas such as kitchen and plant room.

The building is home to the latest advances in aged health care, providing patients and staff with the technology and environment required for ensuring

the highest level of care is provided now and into the future.

The Leighs Cockram JV team delivered this \$200 million project within the campus of an already busy, existing hospital facility. Work was programmed and methodologies developed to ensure the continuity of the existing steam, water, waste, power, data and electrical services.

Construction commenced after significant ground remediation works, with large concrete raft foundations and three-level tall precast concrete canti-lever columns. As the 30-month project neared completion, up to 500 workers were on site daily.









The Hub, Hornby

CHRISTCHURCH

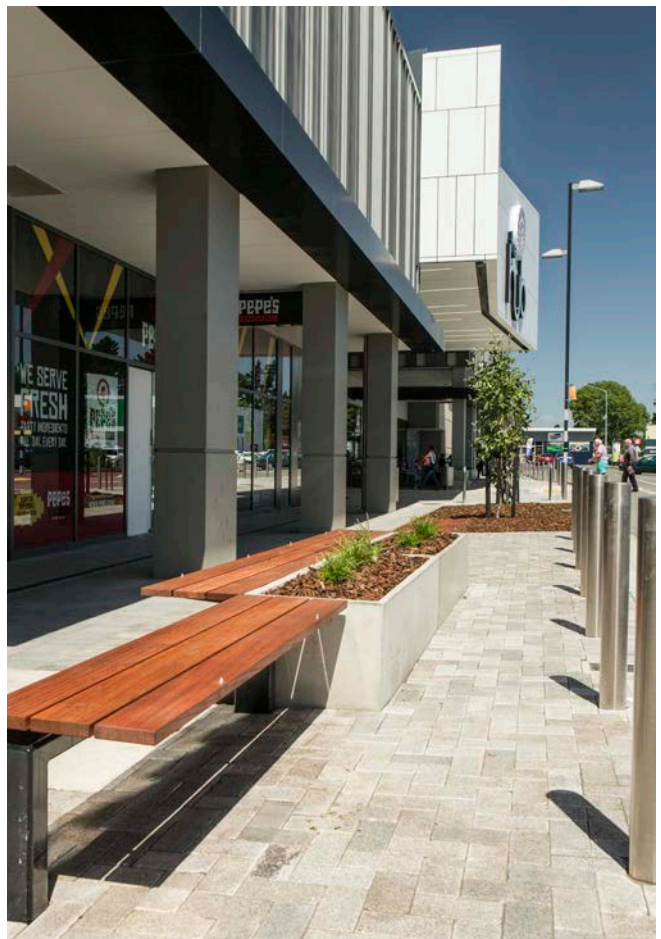
Work began in March 2013 on the first stage of this extension project at Hornby Mall. With the mall remaining operational throughout this four-year project, care and attention has been paid to ensure surrounding businesses and the public are not adversely affected by the construction works. This was initially managed by the majority of demolition works being undertaken outside of trading hours. As well as constructing on new footprints, temporary spaces for tenants were also created.

With the health and safety of workers, staff and the general public key to the

success of this project, initiatives put in place included a fire-rated, waterproof internal wall separating the construction site from the operational facilities.

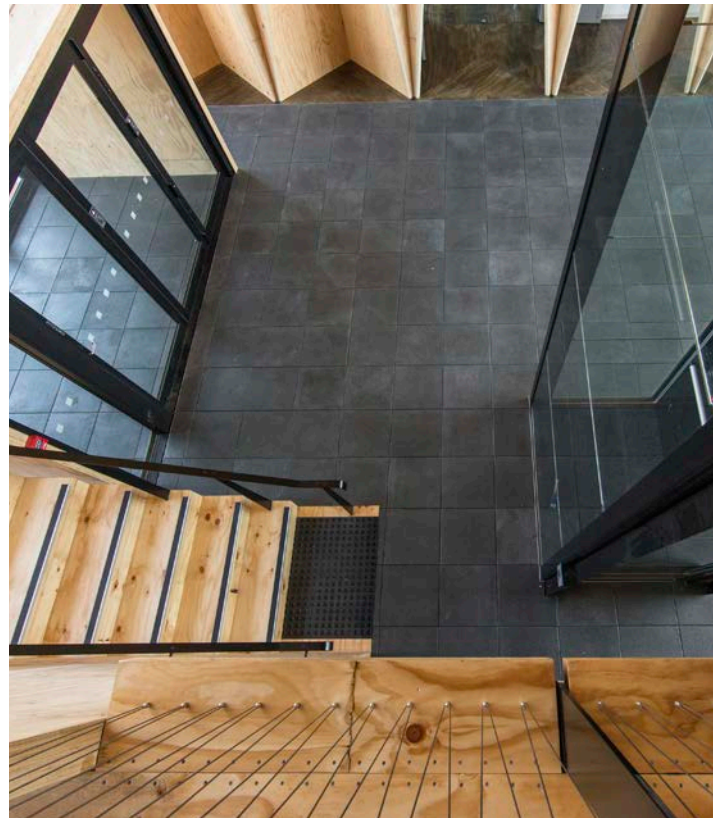
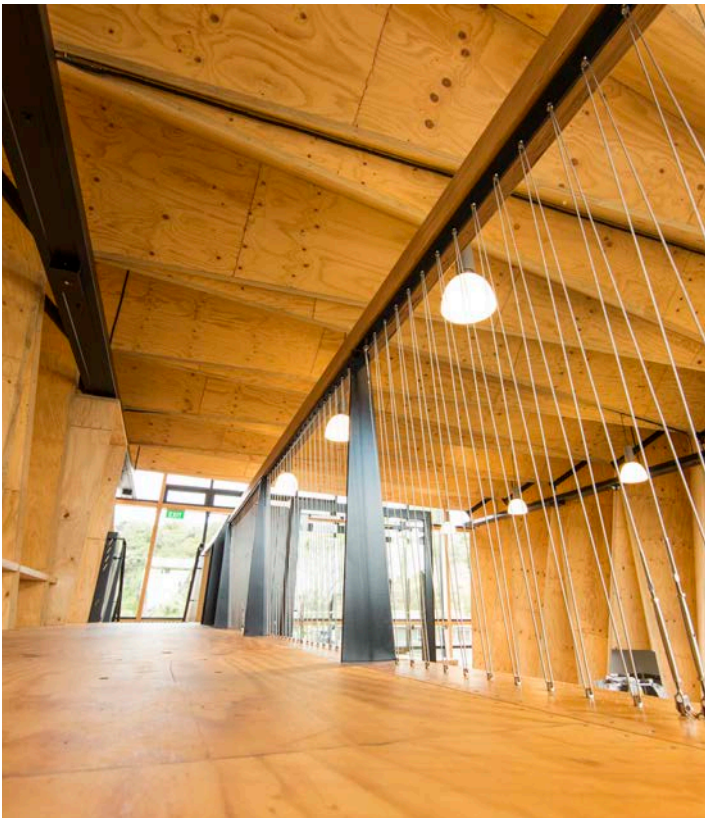
The Hub, Hornby is the only shopping centre in New Zealand to receive Enviro-Mark Gold accreditation for its environmental initiatives, which focus on electrical energy, water and resource minimisation. These issues drove the design considerations for the mall's major redevelopment, including LED lighting, rainwater harvesting for irrigation, and a new waste and recycling area.













Mt Pleasant Memorial Community Centre

CHRISTCHURCH

Taking its design inspiration from the geometric structures of wave patterns and shell architecture, this community centre is nestled between the bottom of Mt Pleasant and the Estuary.

The unique nature of the 45mm LVL billet project is a New Zealand first and required creation of an intricate prototype before construction could begin. The folded surfaces of the building's walls

and roof are fabricated from triangular timber billets, combining skin, structure and services in a minimal envelope that maximises usable space.

A focal point for the community, the centre includes a hall, meeting spaces, offices and kitchen on the ground floor, with a break-out space and studio offering magnificent views on the upper level.





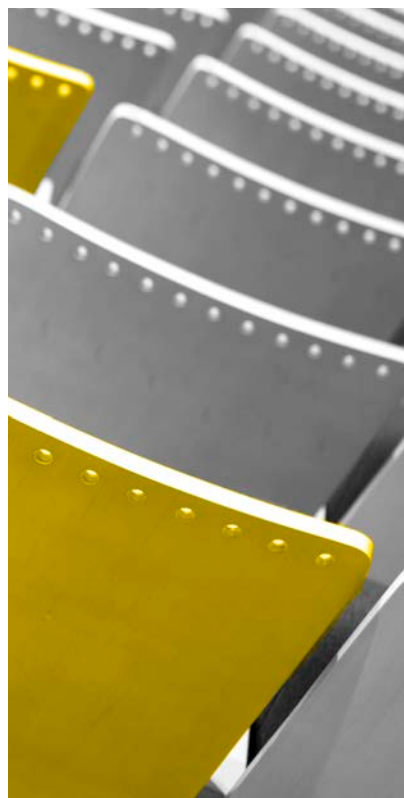
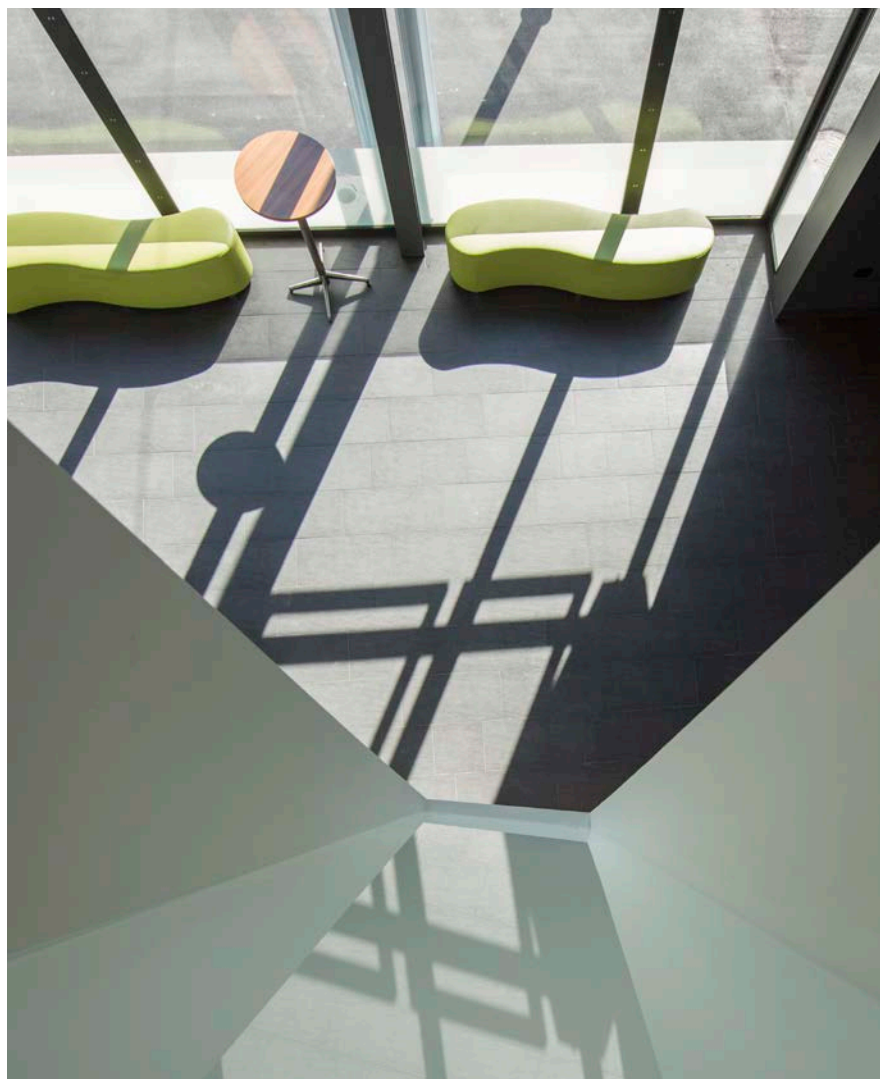
THE PIANO

CENTRE FOR MUSIC AND THE ARTS

PĪPĪWHARAUROA: KUI-KUI WHITIWHITI ORA







The Piano

CHRISTCHURCH

Located in Christchurch's Performing Arts Precinct, The Piano opened its doors in August 2016. The music centre includes a 330-seat raised auditorium, with acoustics designed to enhance presentation of performance music to the fullest.

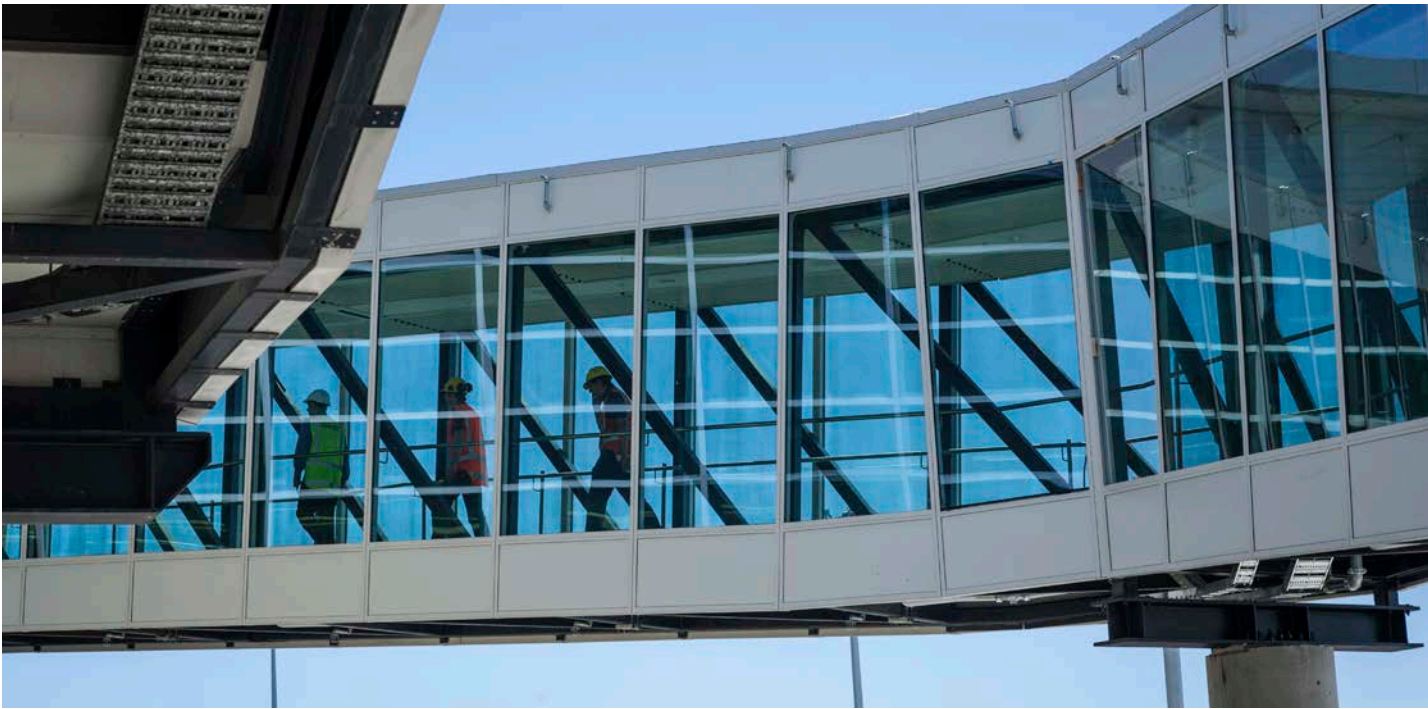
Fully soundproofed and wired for the latest in lighting and audio/visual technologies, the auditorium's stage accommodates a choir of up to 120, an orchestra of 70, or a dance group of 40.

The complex also includes two smaller performance spaces, along with studios and office spaces. The curves, rectangles and architectural details of the design can be traced to those of a grand piano.









CIAL Mars Airbridge

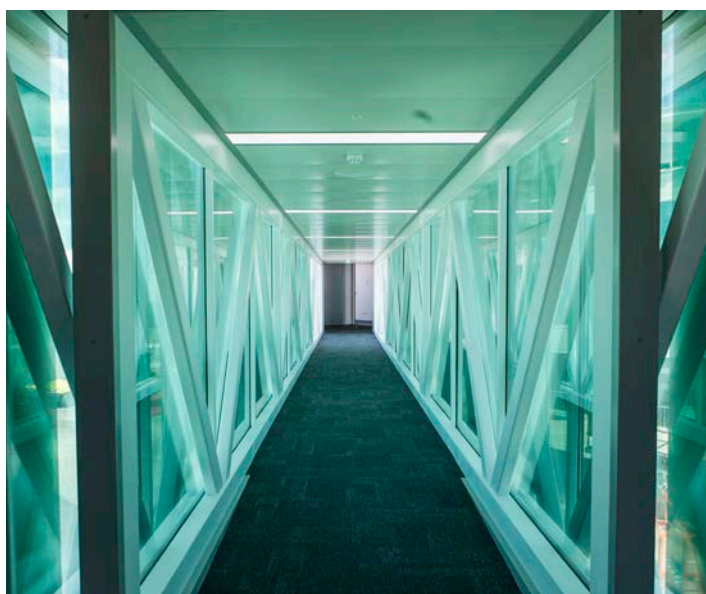
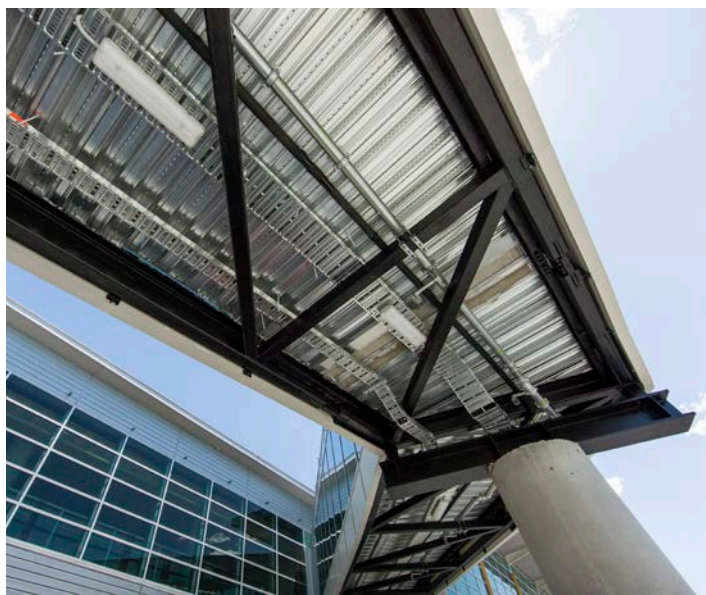
CHRISTCHURCH

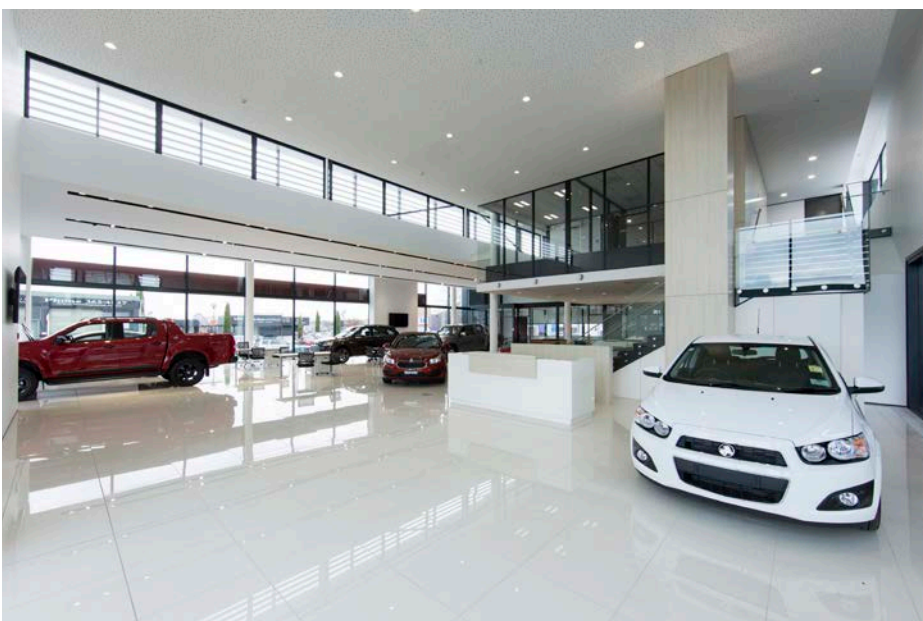
This project at Christchurch International Airport involved a multi-purpose stand of two gates to service large, dual boarding door aircraft, such as Airbus A380 and Boeing 787 Dreamliners. These are CIAL's premium gates, designed to be spacious, and the first to have concrete floors and floor to ceiling windows.

The Leighs Construction team constructed the fixed link, the section of elevated walkway from the terminal to the start of the moveable airbridge. To reduce security issues and foreign object damage making its way into plane engines, the bridge units were constructed off site in a nearby hangar and transported around the apron into place.

The largest unit was 22m long, and weighted over 40 tonnes. Around 300m³ of concrete went into the foundations, with the structure including 50 tonnes of structural steel and 16 tonnes of glass.

On 19th December 2016, the links were ready for the first A380 and pre-Christmas rush.







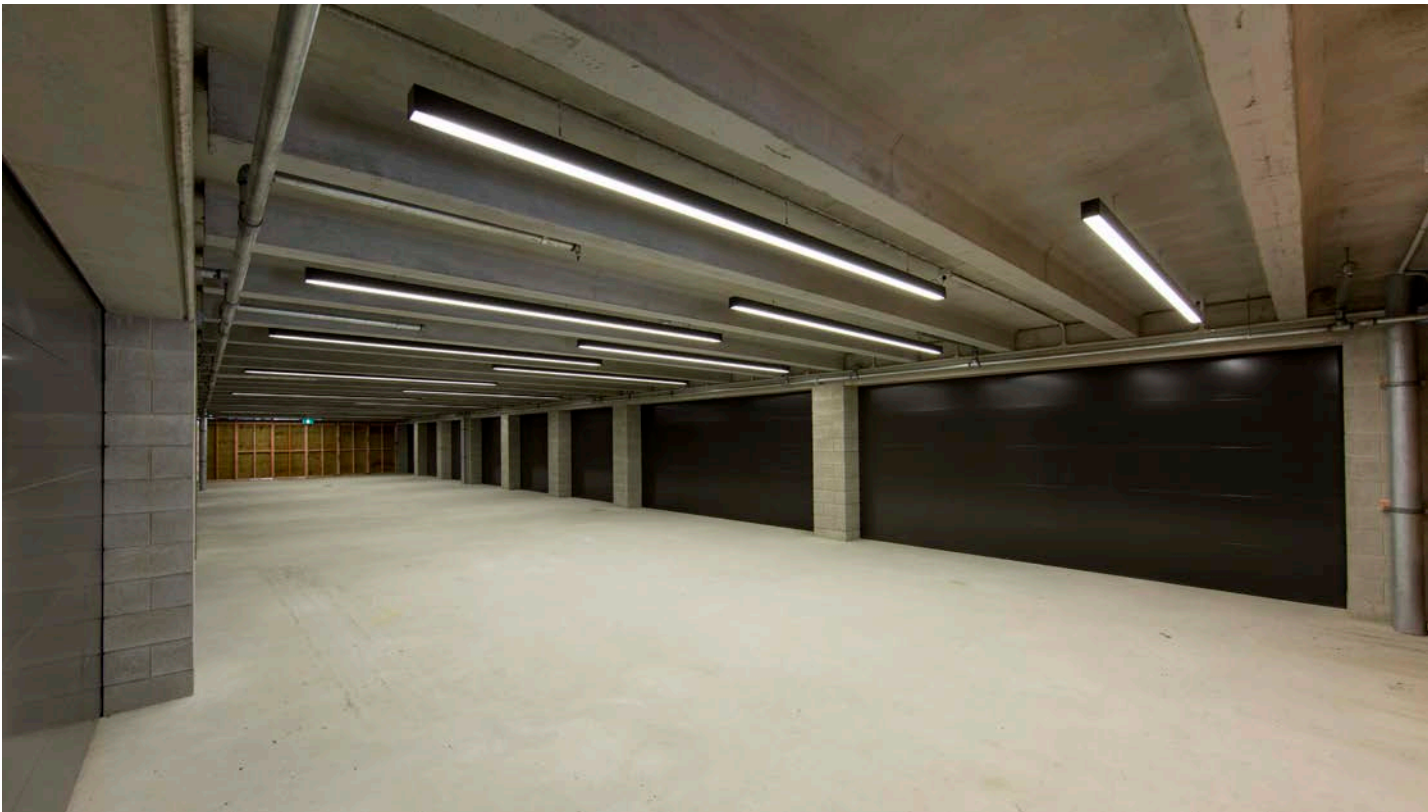
Blackwells Holden & Mazda Yards & Showroom

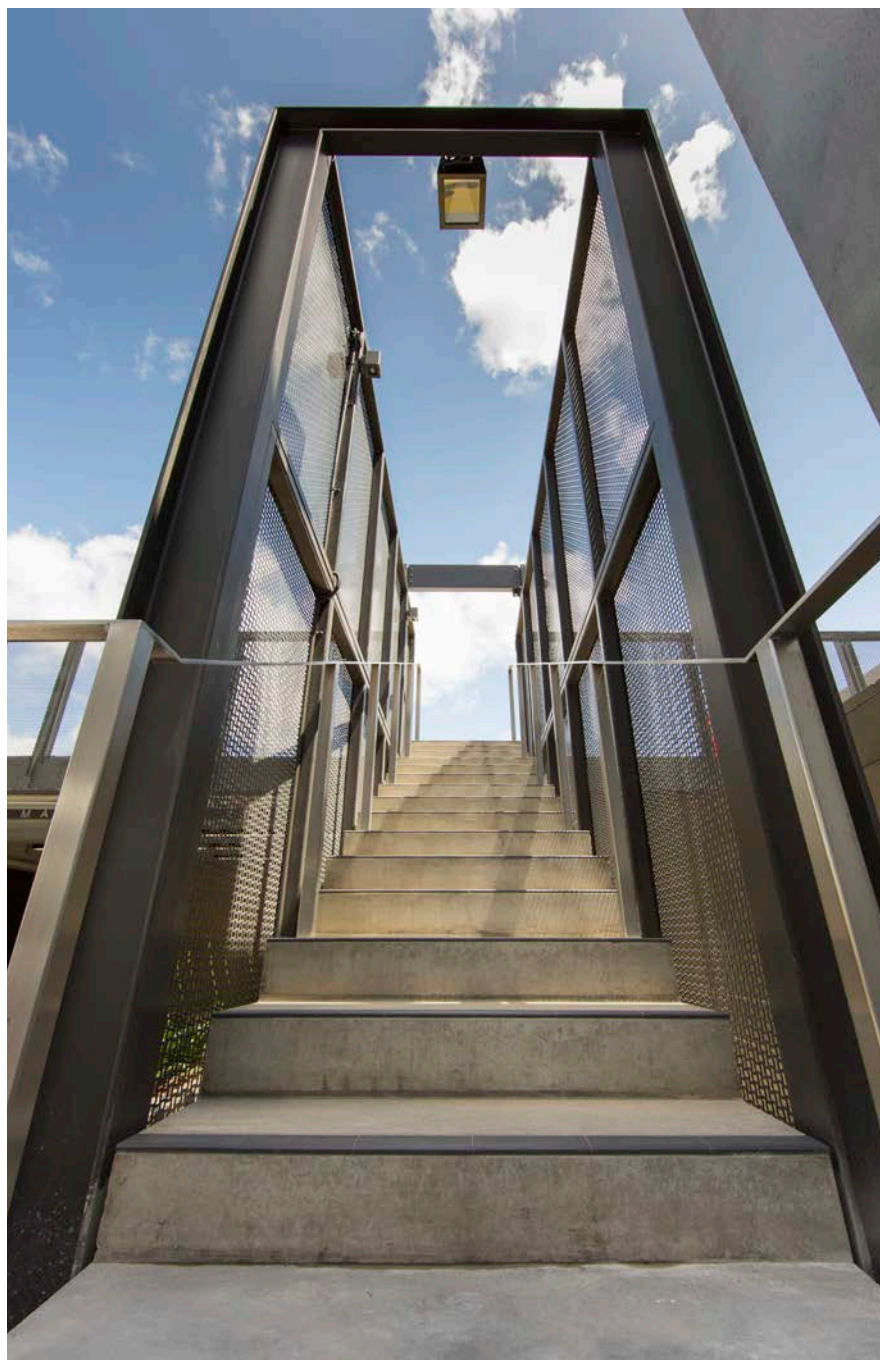
CHRISTCHURCH

In 2011, post-earthquakes, Blackwell Motors' two Cashel Street dealerships relocated to Sockburn. In August 2016, Blackwells returned to the central city and moved into their new premises, which takes up three sites bordering Moorhouse Ave, Montreal Street and Wilmer Street.

Constructed of structural steel portal frames with extensive curtain walling, the two showrooms provide a total of over 1600m², including sales and parts offices. Features include the latest in eco-friendly technology, extensive native landscaping, advanced seismic engineering and dedicated delivery bays.





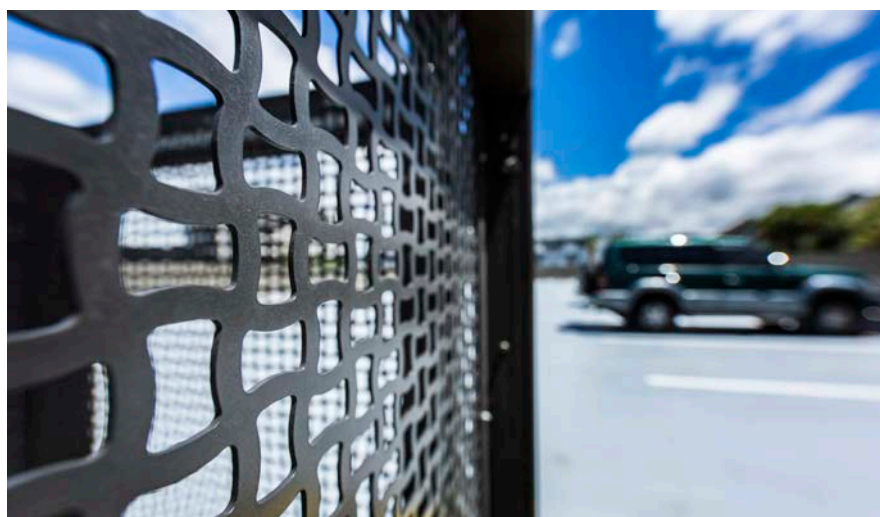


Armagh Street Carpark

CHRISTCHURCH

Located in Christchurch's CBD, this carpark building consists of 14 garages on the ground floor to suit the client's future residential developments, and 29 first floor carparks.

A large, architectural metal screen creates a stunning enclosure to the ground and first floor stair units. Precast planters on the first floor add to the architectural presence of this development. The structure itself is largely block and precast floor units, with in-situ topping slabs.





Hillary Field Centre Extension & Refurbishment

ANTARCTICA

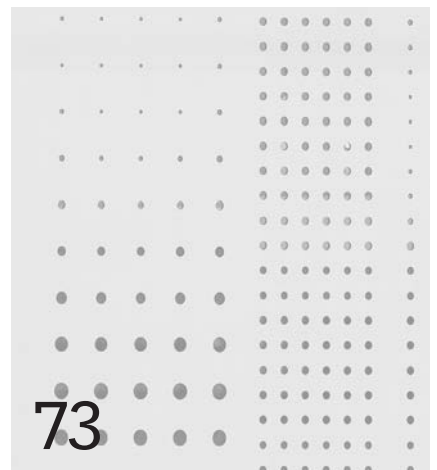
In January 2016, Leighs Construction returned to the ice to carry out refurbishment and extension to the Hillary Field Centre at Scott Base, Antarctica. In 2004, Leighs Construction had become the first private organisation to design and build for the New Zealand Government in Antarctica, with all previous work being carried out by the military.

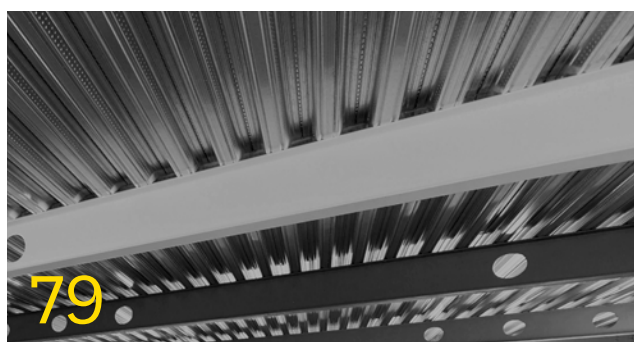
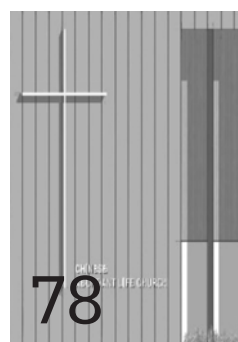
In late 2015, the team had finalised and packed into 47 containers the materials, machinery and equipment required to complete the project, which involved constructing a warm porch and container doc. The boat carrying the goods left on 7th January, arriving at Scott Base two weeks later.

The team worked in temperatures as low as -35°C , and in endless daylight. When the Antarctic summer season closed at the end of April, the team returned to Christchurch, once again journeying to the ice in late August to complete the works.



Current Projects





61 Smales Farm, The B:HIVE

65 SKHY Apartments

67 Nugent Rise Apartments

69 Starship Hospital
Ward Refurbishments

69 Ko Awatea 2,
Middlemore Hospital

71 Christchurch Outpatients

73 Metro Sports Facility

75 Addington Fire Station

75 Arts Centre CE West
Theatre Restoration

77 Prestons Road New World
& Retail Complex

78 Chinese Abundant
Life Church

79 Forte Health Stage 2

79 Gloucester Street
Apartments

81 International Rental
Car Precinct

82 Colombo Street Retail
& Kiwibank

83 University of Otago,
Science 1, Science Precinct

85 University of Otago Dental
School Redevelopment







THEY EIC OR SMA

Smales Farm, The B:HIVE

AUCKLAND

Smales Farm on Auckland's North Shore is devoted to the cultivation of smart businesses, their people and their ideas.

In delivering The B:HIVE, Leighs Construction is at the forefront of the latest phase of development at Smales Farm. This innovative building includes 10,000m² of flexible working space in the five-level commercial office and re-tail building, plus basement carpark and associated infrastructure, site roading, carparks and landscaping. A stunning,

vertical open-air atrium delivers natural light into all floors, with the dramatic floating staircase making an architectural statement.

With sustainability and people at the core of the design, this is the first building in New Zealand to be designed under the principles of the International Wellness Standard, creating a positive, healthy environment for employees.









SKHY Apartments

AUCKLAND

Set at one of the highest vantage points in Auckland, the SKHY Apartments project involves converting a former corporate office tower at the top of Khyber Pass into 12-storeys of luxury apartments.

The second stage of this development includes one and two-bedroom apartments, plus retail spaces, with two levels of basement parking below. At the heart of the development is a landscaped courtyard.

Designed by award winning Cheshire Architects, the design celebrates the concrete mass of the original building, and includes large sheltered outdoor level spaces, over-height ceilings, exposed columns and beams, and high-performance windows designed to work with the solid masses of concrete that frame them.



Nugent Rise Apartments

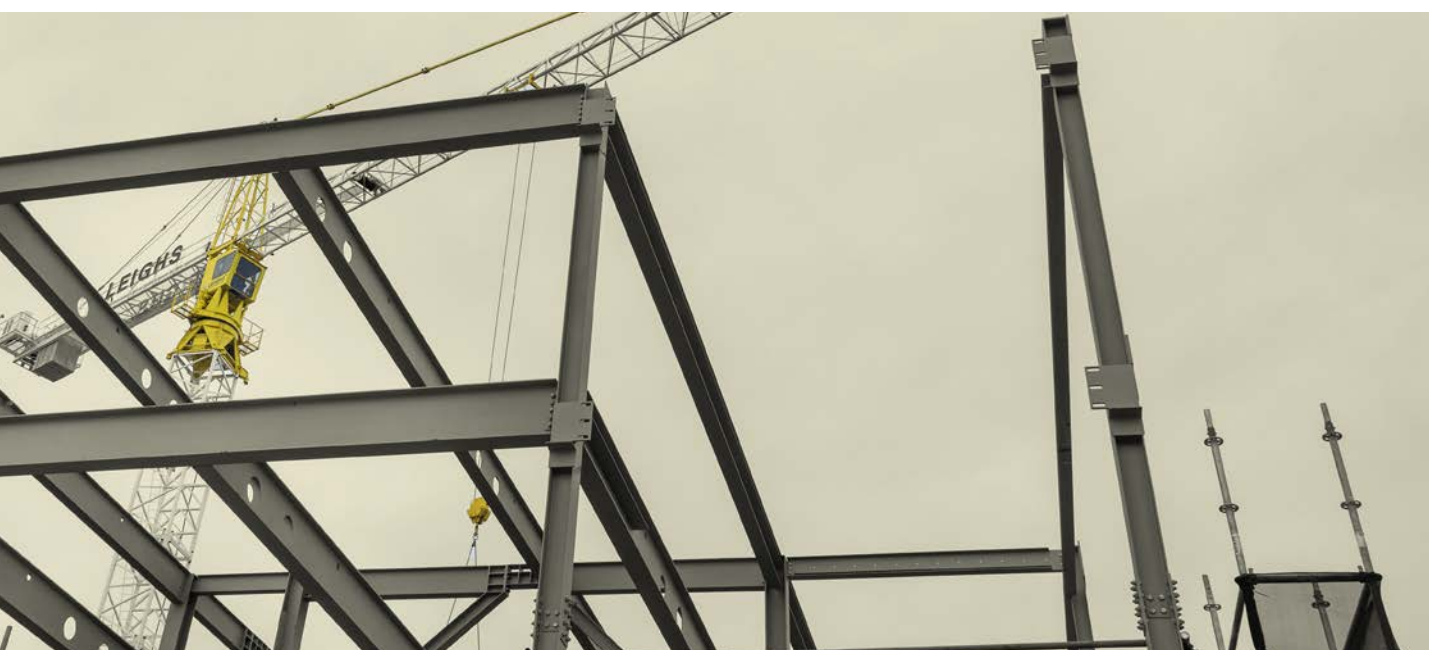
AUCKLAND

The last of five buildings that make up the Nugent Rise complex, this project comprises a six-level, 92-unit apartment building, 511m² of retail space, and associated car parks.

Nugent Rise has been designed with sustainable ideas incorporated into the

building such as LED lighting, rubbish recycling and bike storage facilities. Clad in a combination of raw concrete precast spandrels and aluminium composite panels, aluminium joinery and glass balustrades complete the fabric.





Starship Hospital Ward Refurbishments

AUCKLAND

This project for the Auckland District Health Board at Starship Hospital involves refurbishment of the level 5 children's ward, level 3 outpatients, including office, and the level 1 cathlab upgrade.

Working within a 24/7 operational facility, particularly a children's hospital, involves high levels of communications, and a key focus on the health and safety of all those involved.





Ko Awatea 2, Middlemore Hospital

AUCKLAND

In March 2017, the Leighs Construction team returned to Middlemore Hospital to commence site establishment, this time to construct Ko Awatea 2. The project is an extension of the existing centre, to address an increasing demand for a range of learning and development options.

The three-storey extension includes flexible teaching and learning spaces, patient and whānau centre, lecture theatre, wellness area, and additional car parking spaces.

Christchurch Outpatients

CHRISTCHURCH

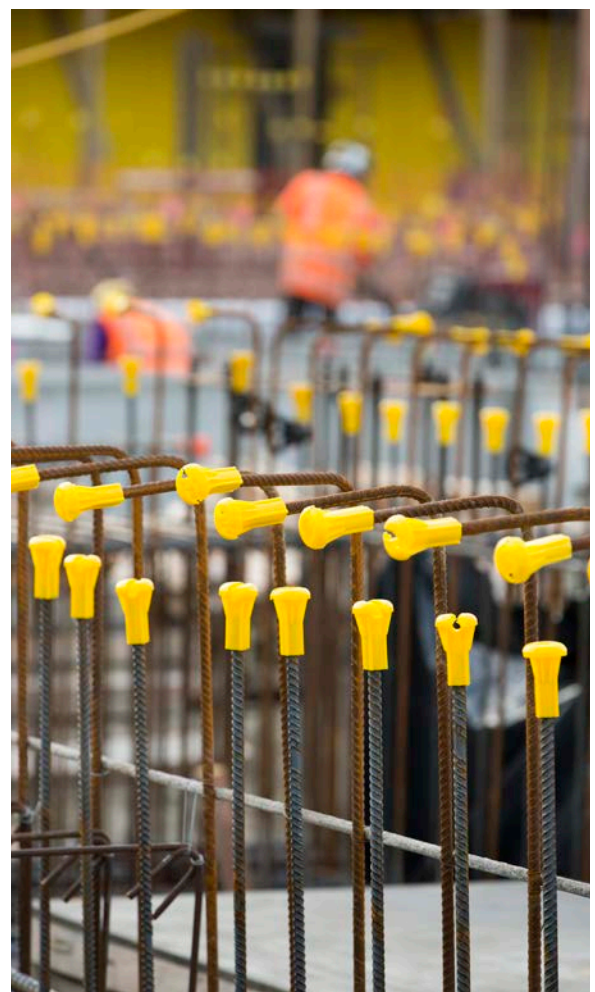
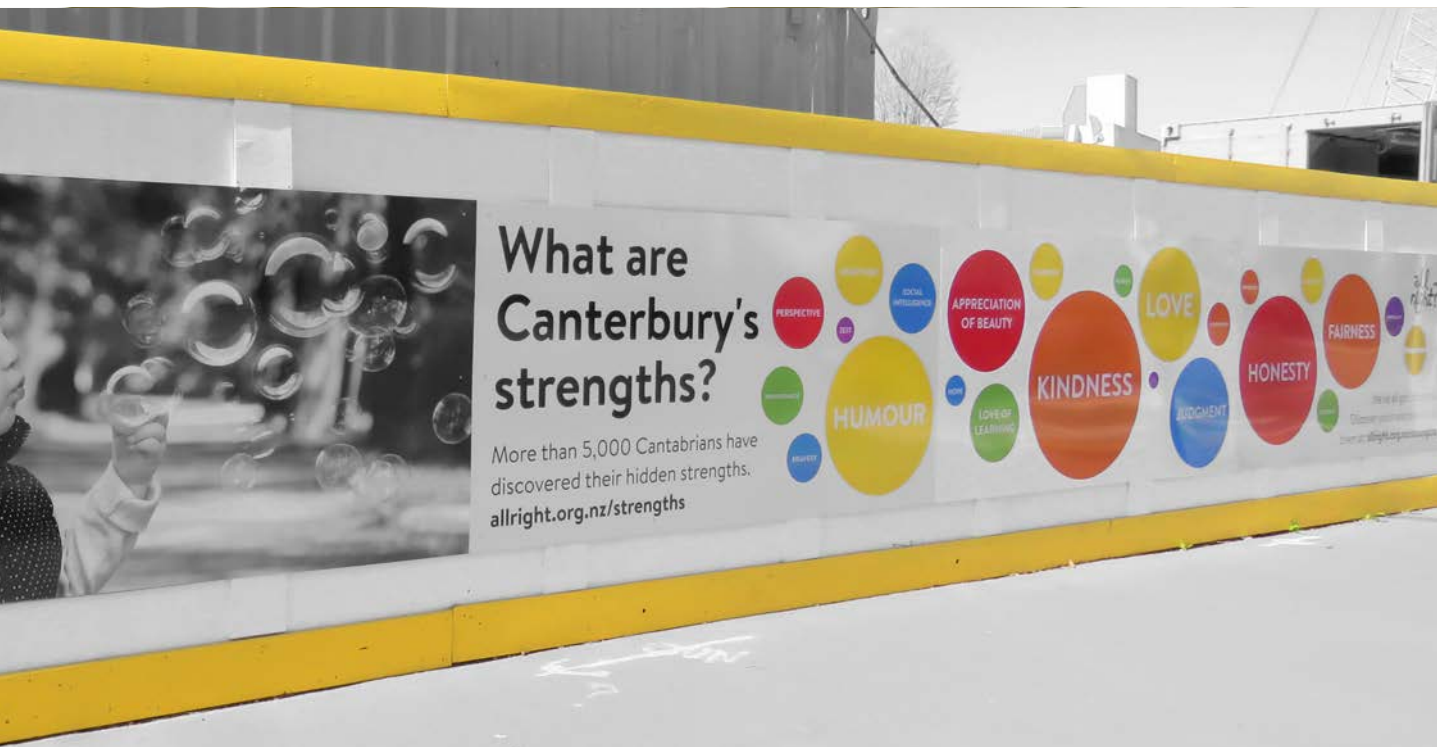
The Leighs Construction team is back at Christchurch Hospital constructing a new outpatients building on the 'St Andrew's' triangle, adjacent to Christchurch Hospital, as part of the Christchurch Hospital redevelopment project.

The 10,500m², five-storey building will, among other functions, provide for a shared clinical support area, including blood collection, Allied Health,

general consultation clinic, diabetes and endocrine, ophthalmology, podiatry, oral health, and staff amenities and workspaces.

At the start of the project, 26m tall, 1200mm diameter piles were drilled into the ground, to ensure ground stability. Circular steel columns rise more than 26m above the ground, creating an impressive construction site.







Metro Sports Facility

CHRISTCHURCH

In September 2016, Otakaro Ltd selected Leighs Cockram JV to proceed as the single ECI contractor for the next design stage of the Metro Sports Facility.

The largest aquatic and indoor recreation and leisure venue of its kind in New Zealand, the Metro Sports Facility will feature a 50m, 10-lane competition swimming pool and a separate diving pool, large aquatic leisure area, five

hydroslides, fitness spaces and nine indoor courts for sports such as netball, volleyball and basketball. The facility will cater for the needs of the recreational, educational and high-performance sporting communities.

The facility will sit on a 70,000m² site bordering Moorhouse Avenue, Stewart Street, St Asaph Street and Antigua Street.



Addington Fire Station

CHRISTCHURCH

This project in Addington involves deconstructing the existing fire station, before building the new Addington Fire Station, comprising of two appliance bays with rear entries and front exits, operational decontamination wash and storage areas, transitional showers and PPE storage spaces, five single bedrooms, ablutions, gym, kitchen and lounge, operations room, quiet room and meeting room.

The secure yard will provide off street staff car parking and appliance wash facilities, with appropriate interceptor traps for the treatment of run off.

Leighs Construction has also been awarded the new Sockburn Fire Station project.





Arts Centre CE West Theatre Restoration

CHRISTCHURCH

Work commenced in late 2016 to restore another wing of the Christchurch Arts Centre, with the repaired buildings set to reopen in 2018. The buildings will house an arthouse cinema, shared office space, a new restaurant and subsidised apartments for writers, scientists and artists.

The project to restore the West Lecture building, which formerly housed the Free

Theatre and five apartments, involves strengthening the building with a reinforced concrete skin wall on the inside of the façade, and new concrete floors to provide bracing. A tower crane is being used to remove elements from the interior of the building, with everything being lifted out through a temporary hole in the roof.



Prestons Road New World & Retail Complex

CHRISTCHURCH

Located on a high-profile site on the corner of Prestons and Marshlands Roads, this project includes a New World

supermarket, retail spaces and a hospitality venue, along with extensive site works, carpark area and landscaping.





Chinese Abundant Life Church

CHRISTCHURCH

Work commenced in August on a new worship centre for the Abundant Life Church in Christchurch.

Located in the new suburb of Wigram Skies, the concrete structure includes a large auditorium, hall, meeting spaces, library, kitchen, parent room, and other community spaces. The new building will

be used both for worship and training purposes, acting as a community hub.

Abundant Life Church is a Chinese Christian church, and is also a non-profit charity. The new worship centre is being built to extend the church's cares and services to the growing needs of the community.

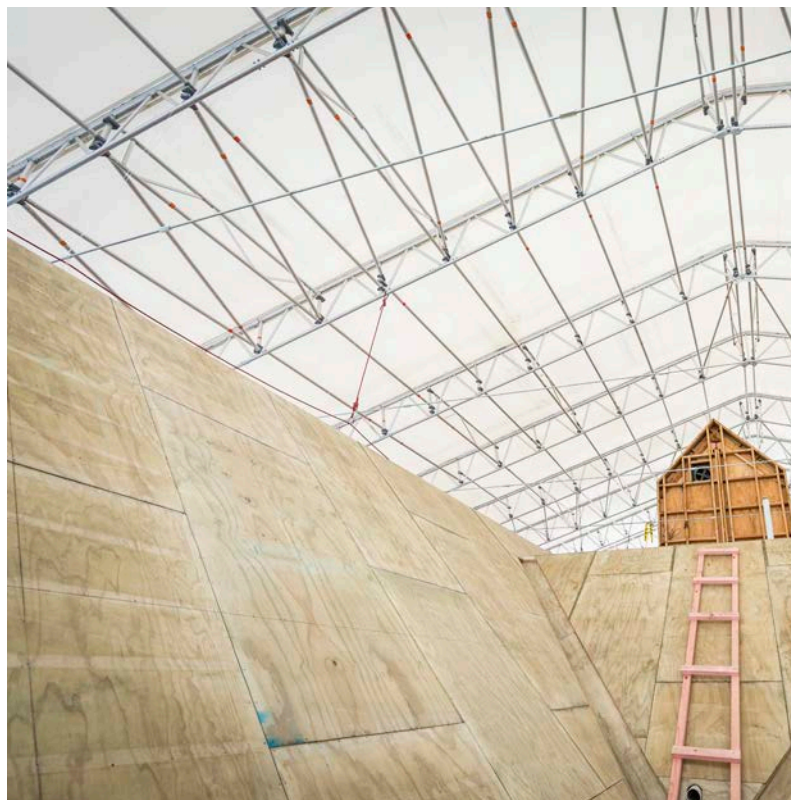
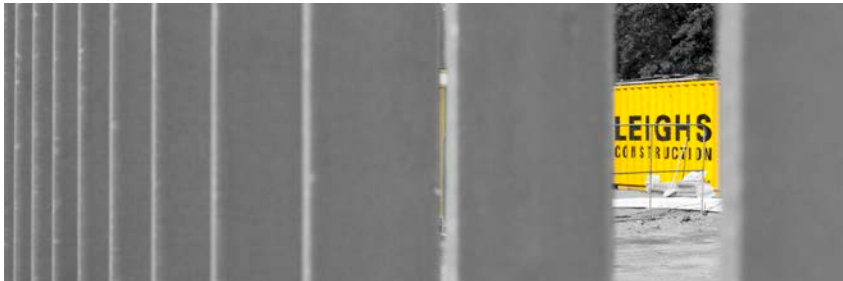


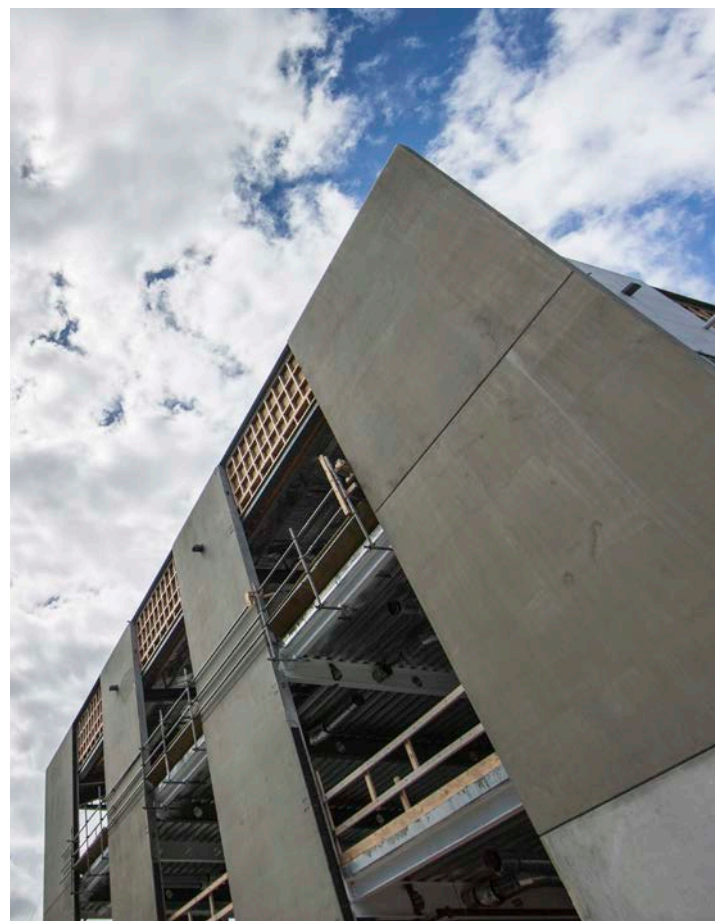
Forte Health Stage 2

CHRISTCHURCH

This project in Kilmore Street involves construction of a three-level consultancy, office and support facility covering 2400m².

The architectural glazed façade is in keeping with the first stage of development, which is adjacent to the site.





Gloucester Street Apartments

CHRISTCHURCH

Vacated following the 2011 Canterbury earthquakes, this project began with decanting of the exterior and roof, along with aspects of the interior. Recladding will not only create a more modern façade, but also result in lighter loading.

A temporary roof was erected to keep the structure weathertight before construc-

tion of the new roof. New balustrades and balconies have also been incorporated into the refurbishment.

Refurbishment of the 29 apartments over 10 levels is being carried out, with a focus on ensuring protection of existing joinery that is integrated into the new interior design.

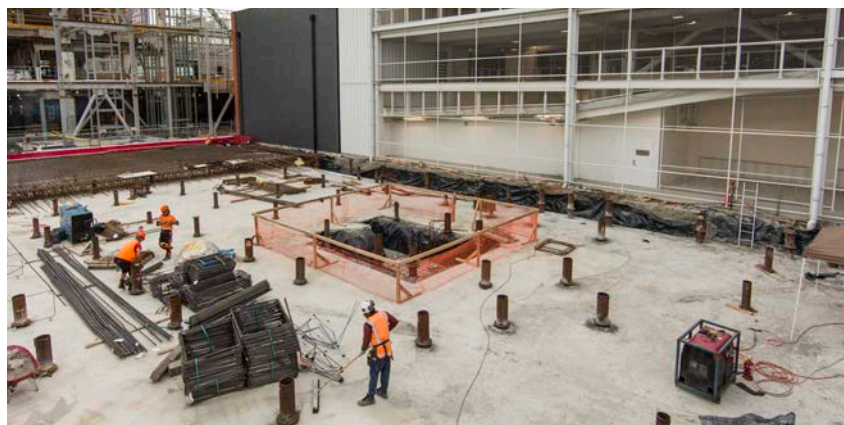
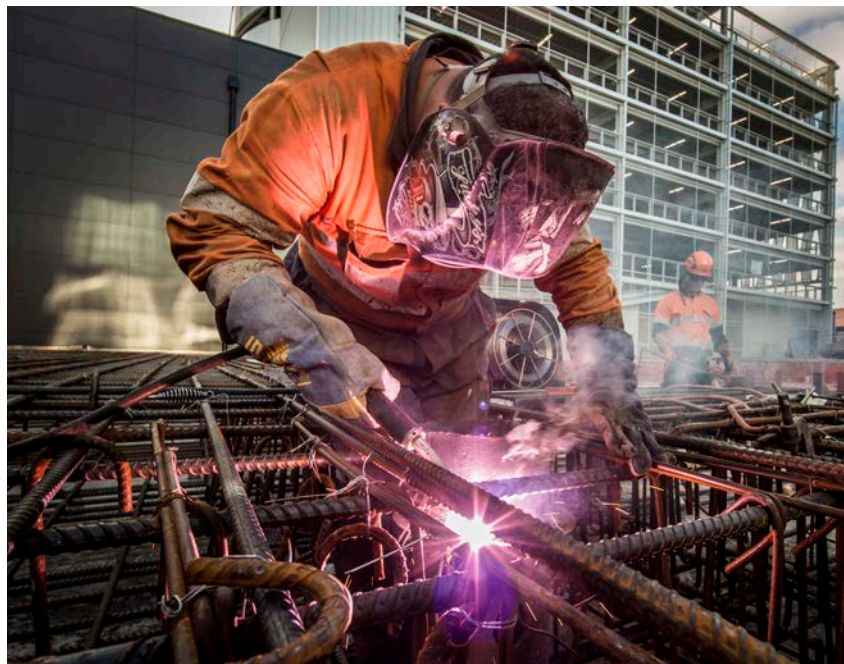
International Rental Car Precinct

CHRISTCHURCH

The International Rental Car Precinct, at the corner of Manchester and Kilmore Streets, Christchurch, sees five of Christchurch's biggest car rental brands joining forces to return to the central city. The three-storey complex sits on a 2000m² property diagonally opposite the old St Luke's church site.

The new complex will have individual reception areas for each rental brand, on-site petrol and diesel tanks, car washing and grooming facilities, 130 onsite car parks, and provision for ten electric vehicle-charging stations.





Colombo Street Retail & Kiwibank

CHRISTCHURCH

Located on the busy Colombo Street/ Lichfield Street corner, award of this project was negotiated with an existing client. Early contactor involvement has provided cost certainty at an early stage, enabling staged consenting and an early start on site.

The three-storey building will be home to Kiwibank, along with various retailers and office tenants.



University of Otago, Science 1, Science Precinct

DUNEDIN



In February 2017, the first stage of this redevelopment project was handed over to the client. Stage one saw a series of chemistry laboratories go from antique to state of the art, as well as the building undergoing a complete external make-over. The redevelopment of the Science 1 building, involving recladding and new windows, roof and exterior design, has achieved more of a statement of the building's use for science.

Included in this project is the remodelling of 6500m² of science laboratories to the

highest current scientific standards, housing a "super-lab" on the ground floor, with more laboratories, and improved airflow and ventilation on additional floors. A temporary laboratory was created, to enable teaching to continue whilst construction was carried out.

Stage two of the project, presently being delivered involves refurbishing the remaining half of the building, along with further exterior enhancements.





University of Otago Dental School Redevelopment

DUNEDIN

Leighs Cockram JV has commenced a major, \$125 million redevelopment of the University of Otago's dental school. The project is the largest capital redevelopment the University has ever undertaken.

The 8,000m² new clinical services building will connect to the rear of the dental school's existing 10,000m² Walsh building. Key to the project is creating a cohesive language between these buildings, connecting new with old, to ensure an ease of navigation for patients, staff and students alike.

The new facility will house clinical services general practice dentistry, together with a variety of specialist dental clinics.

Undergraduate and Postgraduate teaching facilities will include over 200 new dental chairs, the largest dental installation in New Zealand. Eleven clinics will provide a range of services, including general practice dentistry, orthodontics, paediatrics, special needs, radiology, primary care and oral surgery.

The existing Walsh building will house flexible learning spaces, dentistry-specific teaching laboratories, academic accommodation, and a new home for the Sir John Walsh Research Institute.





Community Matters

KEYSTONE TRUST



We're proud to be sponsorship partners with Keystone Trust, and in January welcomed our 2017 sponsorship recipient Victoria Zyzalo, who is studying a conjoint Bachelor of Construction in Construction Management and Quantity Surveying at Unitec in Auckland.

Victoria is our second Keystone Trust scholarship recipient, with Jamie Leach having joined us in 2016.



CHRISTCHURCH SYMPHONY ORCHESTRA



**PROUD TO
BE PART OF
THE CSO'S
JOURNEY**

**A proud sponsor
of the CSO**

leighsconstruction.co.nz







SCAPE PUBLIC ART

Leighs Construction has an exciting history working with SCAPE Public Art. In 2016, our team installed *Diminish and Ascend - Staircase Sculpture*, by Auckland artist David McCracken, in the Kiosk Lake of the Botanic Gardens.

SCAPE
PUBLIC
ART





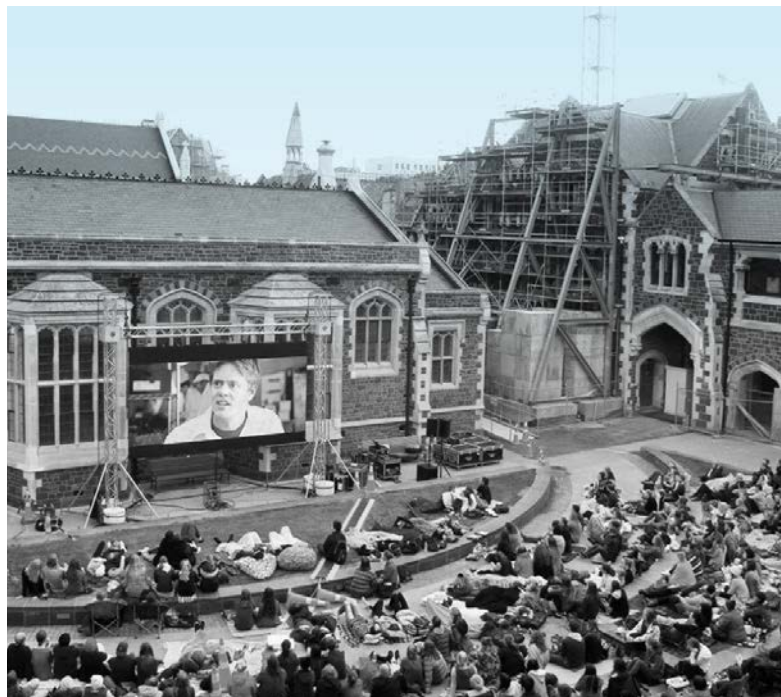
Jeanine Foster © Antarctica New Zealand (2017)

We have a strong relationship with Antarctica New Zealand, and were thrilled to be Emperor Sponsor for this unique event to celebrate New Zealand's 60th anniversary of Scott Base. On 22nd January 2017, a variety of guests, including singer Gin Wigmore, adventurer Ashlan Cousteau, Icebreaker founder Jeremy Moon and astronaut Dan Berry, broadcasted worldwide from the ice.

With a goal of spreading the word about environmental sustainability to an audience wider than those interested in scientific studies, this event was viewed by millions across the globe.



As a sponsor of this Christchurch City Council run competition, Leighs Construction was tasked with constructing the overall and people's choice design entry. Ting Lin's stunning Shell Chapel design now takes pride of place on the New Brighton foreshore.



LEIGHS CONSTRUCTION

Summer Cinema



SECOND FRIDAY EVERY MONTH

9 DECEMBER, 2016 | 13 JANUARY, 10 FEBRUARY, 10 MARCH, 2017

- LOCATED AT THE ARTS CENTRE'S PICTURESQUE NORTH QUAD
- TWO MOVIES EACH NIGHT - 5.30PM & 8PM; SEE WEBSITE FOR DETAILS
- GOLD COIN DONATION GOES TOWARD ARTS CENTRE RESTORATION
- BYO RUGS AND CHAIRS BUT NO BYO ALCOHOL

artscentre.org.nz

LEIGHS
CONSTRUCTION

the
Arts
Centre

 /THEARTSCENTRE  @THEARTSCENTRE

Te Matatiki Toi Ora

HIGHLANDERS



Leighs Construction is excited to be an Associate Partner and official Construction Company of the Highlanders, further reinforcing our commitment to and huge support for the Otago region.

ARTS FESTIVAL DUNEDIN



Having expanded into the Otago region, and as firm supporters of the arts, the team had a great evening as sponsors of Mikelangelo & The Black Sea Gentlemen, as part of Arts Festival Dunedin.



2016 Awards & Accolades

Our people are key to our success, and to exceeding our client expectations. In addition to presenting monthly awards to staff who exemplify our values of Pride, Passion and Excellence (PPE), our annual awards are a celebration of the hard work and dedication displayed by our employees.

HEALTH & SAFETY AWARDS

SOUTH ISLAND

Hamish Ward (right)
Site Manager

Hamish has an uncompromising attitude when it comes to health and safety, ensuring everyone gets home safely, every day. He has risen to the challenge of leading the Health & Safety Committee in its first year.



AUCKLAND

Mario Roy (left)
Carpenter

Mario represents the Auckland carpenters on the Health & Safety Committee. He goes to great lengths to communicate health and safety information to his colleagues, and to ensure they have an open forum to express their concerns and ask questions.



CADET OF THE YEAR

Aaron Kibblewhite **Site Engineer**

Following completion of his Engineering Degree, Aaron joined Leighs in a permanent position at the beginning of 2013, when he commenced his Construction Management Cadetship. Aaron's engineering and problem solving skills came to the fore in the installation of the *Fanfare* sculpture, and he was a key team member on the BNZ Centre project.

In the later stages of Aaron's Cadetship, he affirmed his passion for engineering and for pursuing a career with Leighs as a Site Engineer. In November 2016, Aaron graduated from his Construction Management Cadetship.



APPRENTICE OF THE YEAR

Jack Burmester **Apprentice Carpenter**

Jack's dedication to the units set out in his apprenticeship has been admirable. As has his eagerness to take on further areas of training.

An active member of the Health & Safety Committee, Jack has willingly taken on new tasks, such as traffic management checks and management of subcontractors, and is developing strong leadership skills.



NZIOB SOUTHERN CHAPTER STUDENT AWARD

Henry Moono **Construction Management Cadet**

Henry was presented this award for Excellence in the National Diploma in Construction Management. Henry has completed both NDCM and NDCQ whilst working as a cadet for Leighs Construction.





